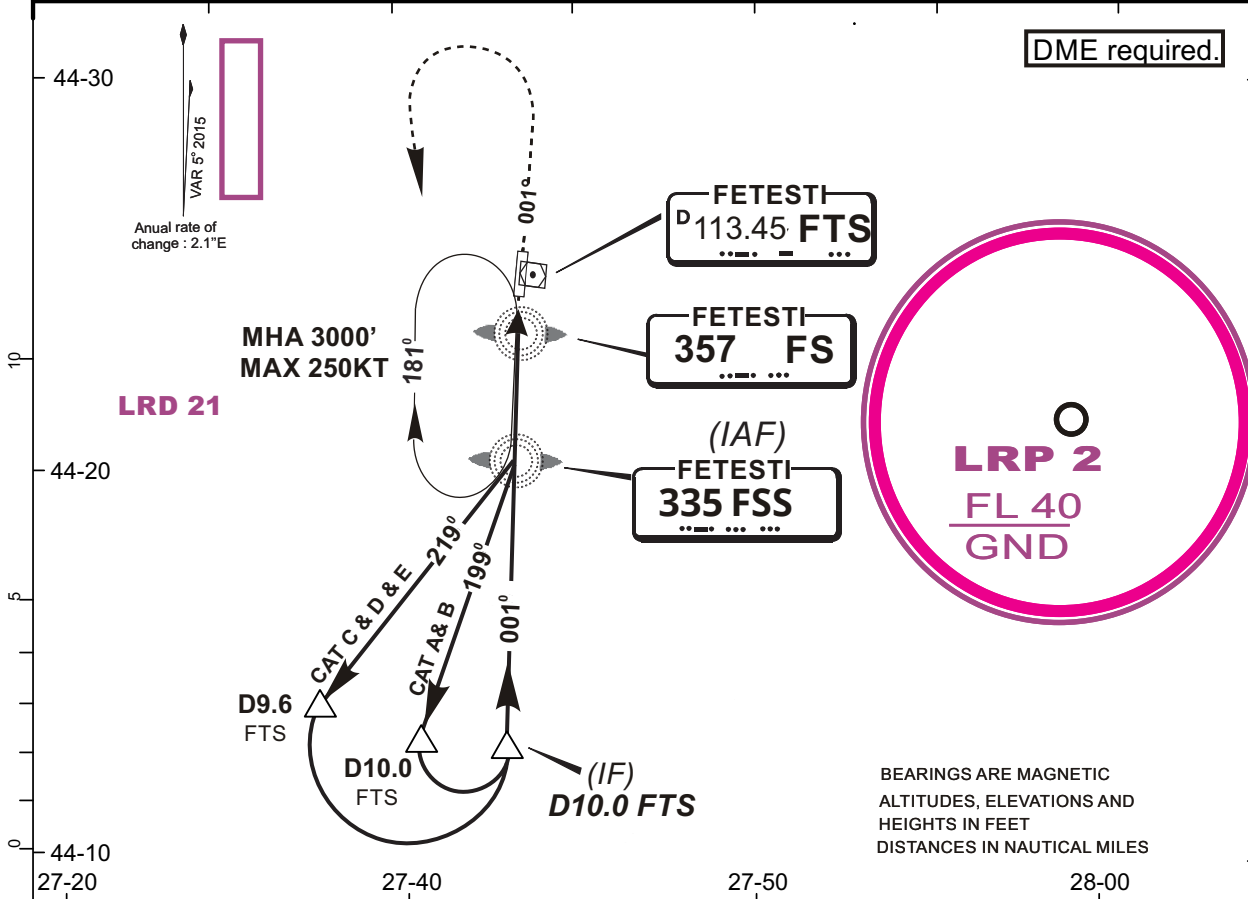


**LRFT/FTS**  
BORCEA- FETESTI

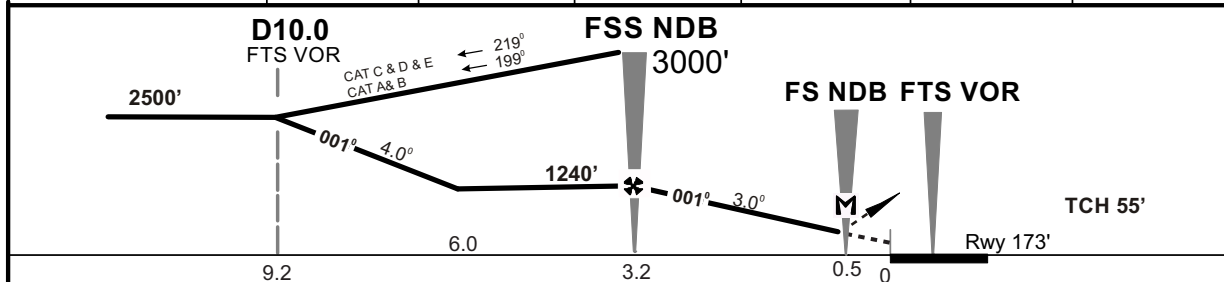
**FETESTI, ROMANIA**  
**NDB Rwy 36**

BRIEFING STRIP™

ATIS 122.525		RUBIN Approach 123.375/309.625		RUBIN Tower 119.325/232.850		
NDB FSS 335	Final Apch Crs <b>001°</b>	NDB FSS <b>1240'</b> (1067')	DA(H) <b>675'</b> (502')	Apt Elev 183' Rwy 173'		
<b>MISSED APPROACH:</b> Climb on RWY HDG to 1500' then turn left inbound NDB FSS climbing to 3000' and hold or as directed.'						
Alt Set: hPa		Rwy Elev: 7 hPa		Trans level: By ATC		Trans alt: 4000'



	27-20	27-40	27-50	28-00
FTS DME	7.0	6.0	5.0	4.0
ALTITUDE	1240'	1240'	1240'	927'



Gnd speed-Kts	70	90	100	120	140	160		1500' ↑ 3000' ← Lt	<b>FSS 335</b>	
Descent Angle	3.0°	377	484	538	646	753				861
MAP at D1.3 FTS VOR (FS NDB)										

<b>Standard.</b> STRAIGHT-IN LANDING RWY 36				CIRCLE-TO-LAND			
DA(H) <b>675'</b> (502')							
ALS out				Max Kts			
A	RVR 1200m			RVR 1700m	100	MDA(H) <b>675'</b> /(502')	VIS 1600m
B	RVR 1300m			RVR 1800m	135	<b>675'</b> /(502')	2000m
C	RVR 1500m			RVR 2200m	180	<b>775'</b> /(602')	2400m
D	RVR 1800m			RVR 2500m	205	<b>790'</b> /(617')	4800m
E	RVR 1800m			RVR 2500m	250	<b>790'</b> /(617')	4800m